

X-HALF CUT N-TYPE serie TOPCon

420/430_{Wp}
Power

TOPCon Cells

Class 1
Fire reaction

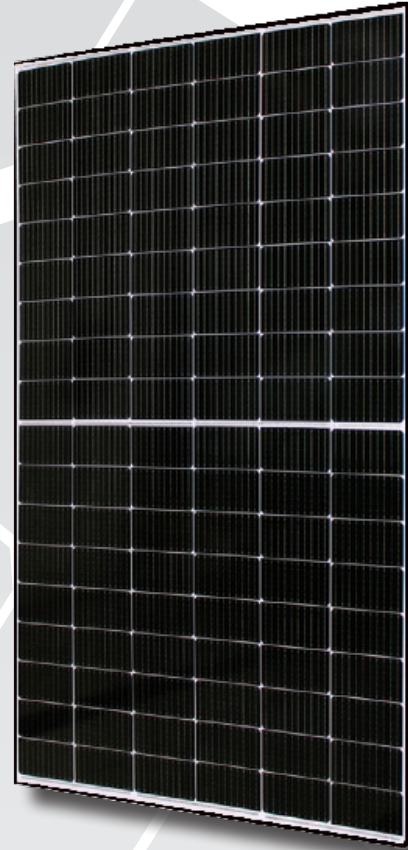
5400 PA
Mechanical Load

182x91_{mm}
Cell Size

22.02%
Module Efficiency

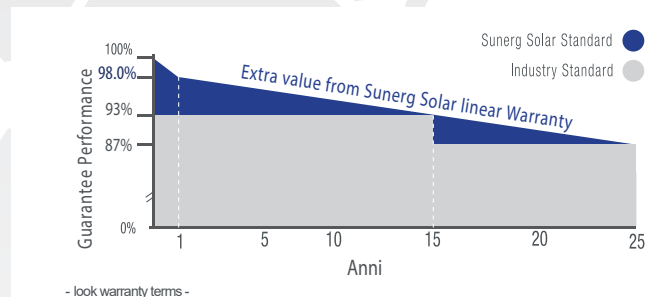
15 years
product warranty

25 years
linear warranty



X-HALF CUT N-Type serie TOPCON+ involves the introduction of a thin oxide layer between the metal contacts and the silicon wafer, which brings significant improvements in cell conversion efficiency and power generation performance.

LINEAR WARRANTY



CONFORM TO

| UNI9177 | PV CYCLE | CE |

UNI EN ISO 9001:2008
UNI EN ISO 14001:2004
UNI EN BS OHSAS 18001:2007

| Quality management system
| Standards for environmental management system
| International standards for occupational health and safety

ELECTRICAL DATA (STC)		XMHCTO420BW+H	XMHCTO425BW+H	XMHCTO430BW+H
Open circuit Voltage	(Voc)	37.89 V	38.07 V	38.25 V
Voltage a Pmax.	(Vmp)	31.36 V	31.55 V	31.73 V
Short-circuit current	(Isc)	14.15 A	14.67 A	14.31 A
Current at Pmax.	(Imp)	13.40 A	13.48 A	13.56 A
Nominal Peak Power (Pmax)		420 Wp	425 Wp	430 Wp
Cell Efficiency		24.70%	24.90%	25.20%
Module Efficiency		21.51%	21.76%	22.02%
Power output tolerance			-0/+5 W	
Maximum voltage			1500 V	
Maximum series fuse rating			25 A	
Limiting reverse current			20 A	
Operating Temperature			- 40°C to 85°C	

Tolerance electric measurement and Power Output ±3%

* STC (Standard test conditions)

Irradiance 1000 w/m², temperature 25°C, AM= 1.5

ELECTRICAL PARAMETERS AT NOMINAL MODULE OPERATING TEMPERATURE (NMOT)

Peak Power	(Pmax)	318.0 W	321.8 W	325.6 W
Open Circuit Voltage	(Voc)	36.00 V	36.20 V	36.30 V
Short Circuit Current	(Isc)	11.43 A	11.50 A	11.56 A
MPP Voltage	(Vmp)	29.80 V	30.00 V	30.20 V
MPP Current	(Imp)	10.67 A	10.73 A	10.78 A

* NMOT (Nominal Module Operating Temperature)

Irradiance 800 w/m², temperature 20°C, wind speed 1 m/s

TEMPERATURE COEFFICIENT

Pmax Temperature Coefficient **-0.316% / °C**

Voc Temperature Coefficient **-0.249% / °C**

Isc Temperature Coefficient **0.045% / °C**

MECHANICAL DATA

Maximum Load **5400 Pa**

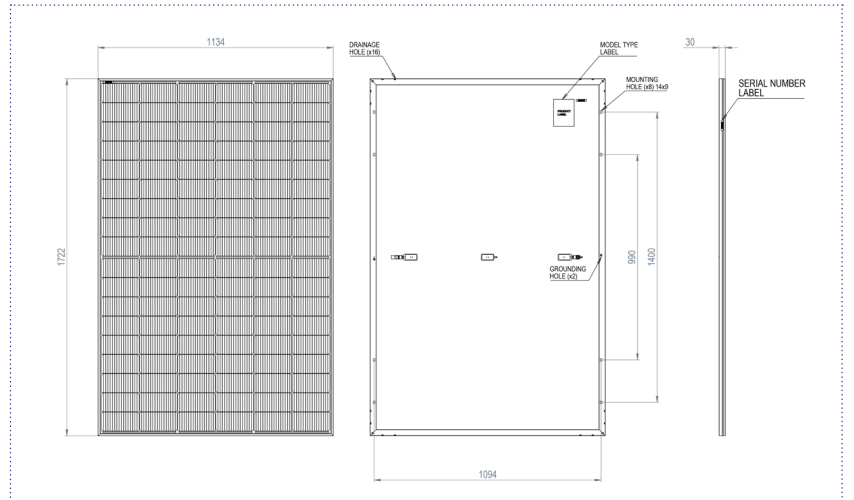
Dimensions (mm) **1722 x 1134 x 30**

Weight (Kg) **20.2**

Solar cells type **N type Mono**

No. solar cells **108 (6x18)**

Dim. solar cells **182x91mm +/-1mm**



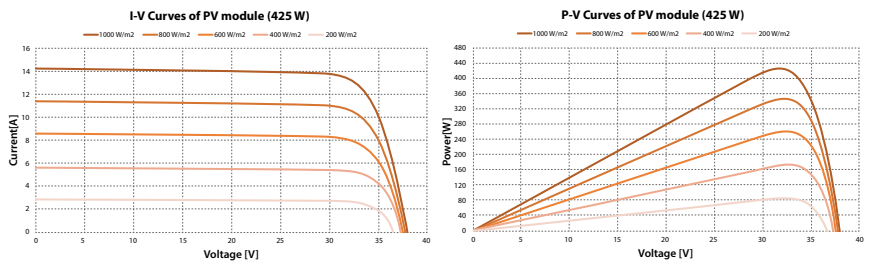
GENERAL INFORMATION

Front Glass **3,2 mm, Tempered solar glass**

Frame **Anodized aluminum alloy, with twin-wall profile and drainage holes**

Junction Box **IP68 Rated with 3 Bypass diodes**

Output Cable **4.0mm², 1100mm length, MC4 compatible connectors**



PACKING CONFIGURATION

Module per Pallet **36 pcs.**

Modules per container 40'HQ **936 pcs.**

Product properties not specified are at the sole discretion of Sunerg Solar S.r.l. Sunerg Solar S.r.l. reserves the right to make changes to the technical data of the product without prior notice. The technical details of the form, although included with the utmost care, may contain errors or inaccuracies not attributable to Sunerg Solar S.r.l.